

Pistia stratiotes
(Water lettuce)
in the
Kruger National Park

Dr C.J. Cilliers¹ and L. Foxcroft, B. Martin, S. MacFayden²

¹ARC-PPRI, Pretoria, 0001.

²KRUGER National Park, Skukuza.



Waterslaai / Water lettuce

Pistia stratiotes (water lettuce) is a declared weed in South Africa.



Country of origin:
South America

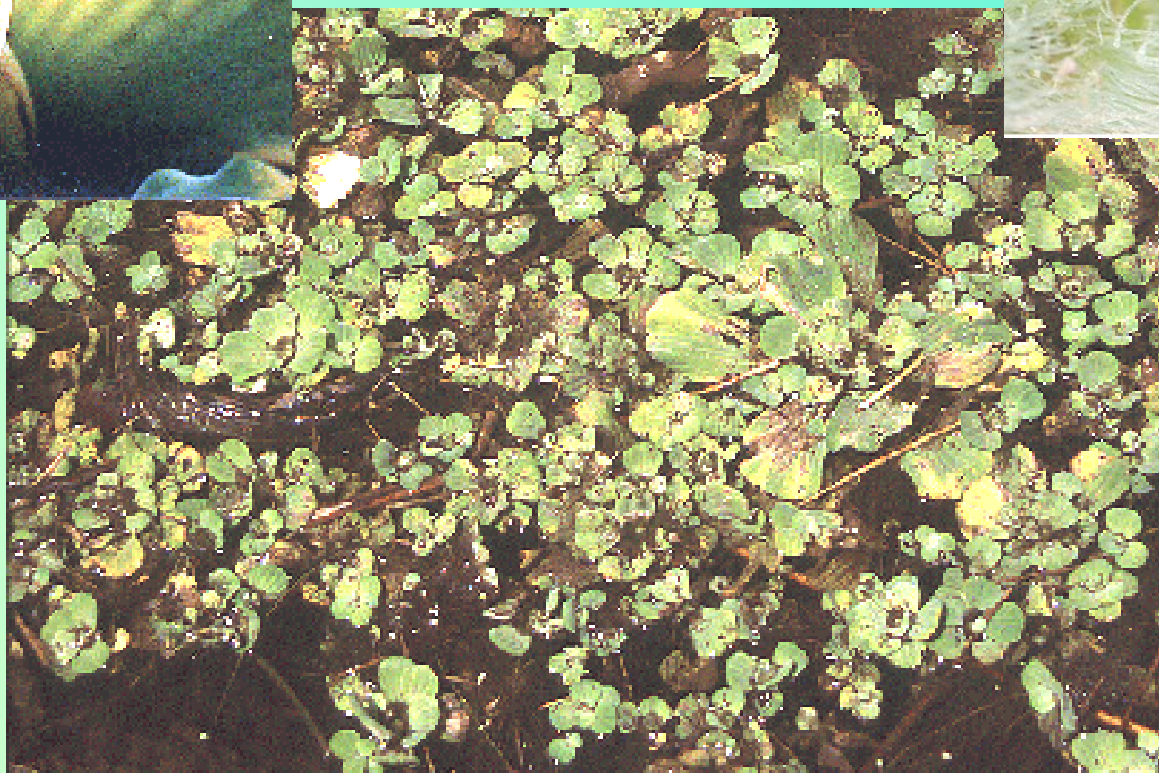
**Water lettuce is under
biological control in
South Africa.**

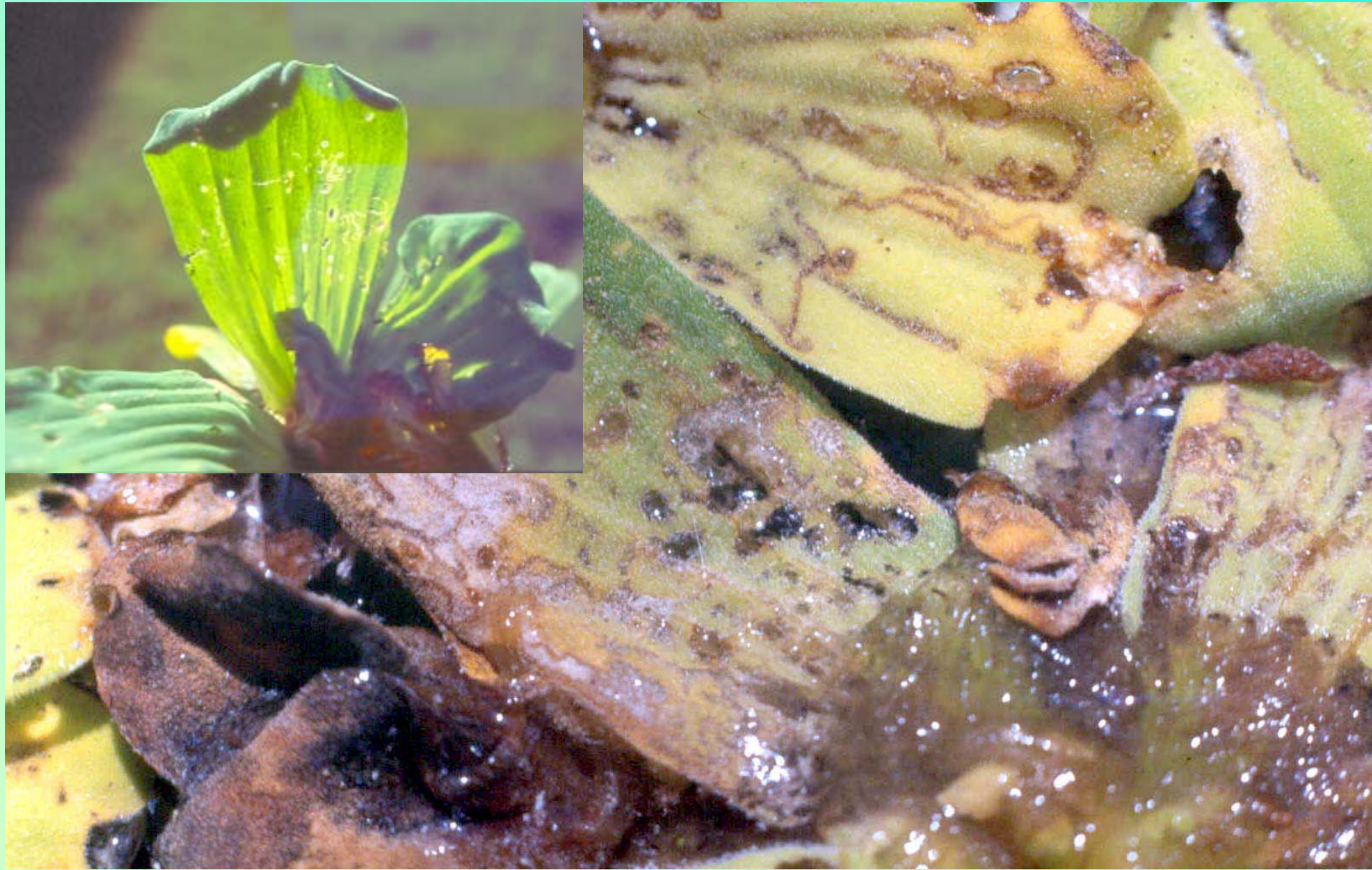
Host specific natural enemies and their effect on the weed



Pathogen:
*Cercospora
pistiae*

Weevil:
*Neohydronomus
affinis*





***Pistia stratiotes* (water lettuce) damage.**

Pan

Time to control the weed (water lettuce) on different water bodies



**Nhlangaluwe:
Dec. 1985**

**Nhlangaluwe:
Sept. 1986**



River / Rivier



**Lower Sabie:
Sept. 1987**

**Time to control the weed
(water lettuce) on different
water bodies**

**Lower Sabie:
Jan. 1993**





**Orpen Dam:
1999**



**Orpen Dam:
2002**

Dam



**Sunset Dam:
May - June
1997-2002**

**Sunset Dam:
Sept.- Nov.
1997-2002**

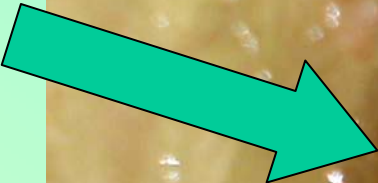


- **Recurring coverage of water surface.**

Why?

- **Annual seasonal cycles**
- **Fluctuating water level**

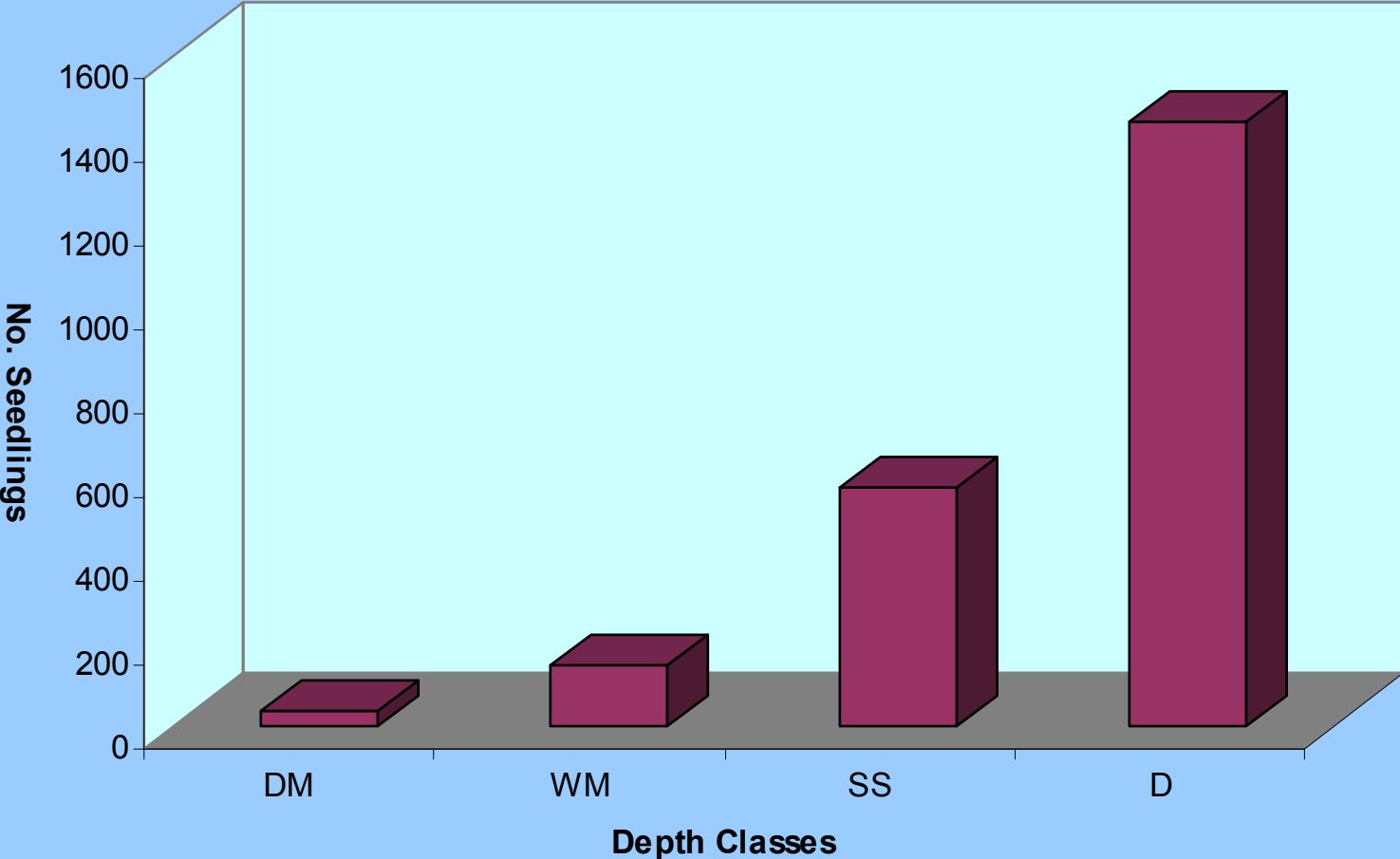
Seeds



Seedlings



Seedling Growth at Various Depths



- **Man made impoundment**
 - **Beetles die when food source declines**
 - **Seedlings**
- **Lag in time till beetles catch up again**

**Biological control of
water lettuce is
successful.**