



## Introduction

Along the South Coast of South Africa lies one of the most beautiful stretches of coastline in the world, home to the Garden Route National Park.

A mosaic of ecosystems, it encompasses the world renowned Tsitsikamma and Wilderness sections, the Knysna Lake section, a variety of mountain catchment, Southern Cape indigenous forest and associated Fynbos areas. These areas resemble a montage of landscapes and seascapes, from ocean to mountain areas, and are renowned for its diverse natural and cultural heritage resources.

Managed by South African National Parks, it hosts a variety of accommodation options, activities and places of interest. A jewel in South Africa's crown, the Park is a prime example of the country's unique fauna and flora and will offer unforgettable views and life-long memories.

## Accommodation

### General

- You can choose to stay in a number of different accommodation units in the three different camps, Storms River (Tsitsikamma Section), Nature's Valley (Tsitsikamma Section) and Wilderness (Wilderness Section). To view this accommodation, simply select a camp and then view '[availability](#)' on the left hand navigation bar in order to see what the units the camp offers.
- You can [book and pay for accommodation online](#) or [contact reservations](#).
- All accommodation, ablution and kitchen facilities are serviced by cleaning staff on a daily basis.
- Currently bedding is supplied in all accommodation (except camping).
- Cooking utensils and refrigeration are provided in most accommodation units. Exceptions will be indicated when booking.
- Adult is 12 years or above.
- Child (2-11 years), under 2 years - Gratis
- Additional Person Supplements are applicable to those units where number of beds exceeds the base occupancy, if these beds are occupied.

### Description of Garden Route Accommodation

Garden Route National Park offers a variety of camp-run accommodation. Each camp has its own unique selection of accommodation types.

### Knysna Lakes Section Accommodation

#### [Camping Decks \(Knysna Lakes Section\)](#)

The Forest Timber Camping Decks lies in the heart of Knysna Forest. Set in a landscape of beautiful beaches and rocky headlands, shimmering lakes, green pastures and jagged mountains, the Knysna Forest Camping Decks affords the visitor an opportunity to feel at one with nature.

#### [Tree Top Forest Chalets \(Knysna Lakes Section\)](#)

The Tree Top Forest Chalet: situated in Harkeville forest between Knysna and Plettenberg Bay, This 4 star chalet



is tucked away at the head of a wide valley.

## Basic Accommodation Types

### Forest Huts

These forest huts are available at [Nature's Valley](#) and [Storms River](#) rest camps.

### Family/Log Cottages & Forest Cabins

These accommodations are available at both [Wilderness](#) and [Storms River](#) rest camps.

### Caravaning/Camping

All with communal ablution, laundry and washing up facilities. A maximum of six persons, one caravan with a side tent and one vehicle, or one tent and one vehicle, or one autovilla or motorised caravan will be permitted per site. These are all available in the Knysna Area as well as the [Storms River Mouth](#), [Wilderness](#) and [Nature's Valley](#) rest camps.

## Natural & Cultural History

- [Wilderness Section](#)
- [Tsitsikamma Section](#)

## How to get there

### Tsitsikamma Section

- The Tsitsikamma Section is situated some 615km from Cape Town, 195km from Port Elizabeth and 68km from Plettenberg Bay.
- The access route from the N2 highway and all internal roads are tarred. Car hire is available at Plettenberg Bay, which is also the nearest airport (limited scheduled flights). Airports are also found in George and Port Elizabeth.
- [Gate times](#) (Storms River Rest Camp)
- [Gate times](#) (Nature's Valley Rest Camp)

### Knysna Section

- The Knysna Lakes Section lies on the scenic Garden Route, some 500km from Cape Town and approximately 300km from Port Elizabeth. Rental facilities and a national airport can also be found at George, some 70km from Knysna.
- Distance on the N2 from Knysna into Uniondale Road (R339) to Diepwalle (camping sites and guest house) is 23km. Travel on the gravel provincial road.
- All the major car hire companies have offices at the George Airport and there are specialised companies in Knysna that provide airport transfers. The upgraded road between Cape Town and Port Elizabeth is very good, making road travel along the scenic Garden Route a pleasure.

### Wilderness Section

- The Wilderness Section is situated close to the N2 highway, 15km from George, 2km from Wilderness

village, 410km from Port Elizabeth and 450km from Cape Town. The closest airport is at George, where car hire facilities are available.

- [Gate times](#)

Guests visiting Wilderness Ebb & Flow camp, please note the road sign on the N2 to the Park reads "Wilderness National Park" (but is currently known as the Wilderness Section) and not Ebb & Flow. Guests can also use the western access through the town of Wilderness across the rail road bridge and turn right for the reception.

## GPS waypoints

### Storms River:

- S 34 01' 18.8" E 23 53' 47.9"

### Nature's Valley:

- S 33 58' 19.0" E 23 33' 48.2"

### Knysna:

- S 34 02' 57.80 E 23 02' 44.49



## Regional/Area Maps

- [Tsitsikamma Section](#)
- [Wilderness Section](#)

## Knysna Section

### Map of Knysna Lagoon



## Tariffs

- [General Tariffs Information](#)
- [Pensioners' Discount](#)
- [Daily Conservation Fee](#)
- *Members of SANParks' loyalty programme WILD do not pay conservation fees provided that proof of identity and their WILD card are shown on arrival.*
- [Cost of a Wild Card](#)
- [View accommodation pictures and availability for Garden Route National Park](#)

## Tsitsikamma Section

### Daily Conservation fees for 1 November 2011 to 31 October 2012

South African Citizens and Residents (with ID)	R32 per adult, per day R16 per child, per day
SADC Nationals (with passport)	R64 per adult, per day R32 per child, per day
Standard Conservation Fee	R108 per adult, per day R54 per child, per day

## Nature's Valley Section

### Daily Conservation fees for 1 November 2011 to 31 October 2012

South African Citizens and Residents (with ID)	R27 per adult, per day R14 per child, per day
SADC Nationals (with passport)	R27 per person, per day
Standard Conservation Fee	R54 per adult, per day R27 per child, per day

## Wilderness Section

### Daily Conservation Fee for 1 November 2011 to 31 October 2012

South African Citizens and Residents (with ID):	R22 per adult, per day R11 per child, per day
SADC Nationals (with passport):	R44 per adult, per day R22 per child, per day
Standard Conservation Fee (Foreign Visitors):	R88 per adult, per day R44 per child, per day

The tariffs for each camp are available under the relevant camp.

- [Storms River](#)
- [Natures Valley](#)
- [Wilderness](#)

## Vital Information

### Climate

Nature has blessed the Garden Route National Park (Tsitsikamma, Knysna and Wilderness Sections) with a pleasant, temperate climate; it is unique in Africa as the only area in which rainfall occurs throughout the year.

And, to cap it all, most of our rain falls at night! It's the ideal climate for a visit - at any time of the year!

### Day Visitors

The park is ideal for day visitors with various picnic sites at the rest camp and at the lagoon.

### Fuel Stations: Petrol/ Diesel

Vehicle fuel is available in all parks (or is available on the park periphery):

- South African legislation stipulates that fuel stations will accept legitimate *petrol/fuel/garage/credit/debit cards* or cash as a form of payment for any fuel purchase.

### Firearms

No firearms allowed.

### Internal Road Network

The access road from the N2 is paved however the access from the northern camp is gravelled.

Please see detailed *Tips & Hints* at the various camp pages.

### Contact Information

For enquiries e-mail [Garden Route National Park](#) or phone us on the following numbers:

Section		Telephone	Fax
<b>Wilderness Section</b>	Reception Desk (24 hours) Farleigh Forest	(044) 877 0046 (044) 356 9021	(044) 877 0366 (044) 356 9028
	Thesen Island Harkerville Forest Diepwalle Forest	(044) 302 5600 (044) 382 2095 (044) 532 7770 (044) 382 9762/3	(044) 302 5627 (044) 382 2095 (044) 532 7770 (044) 382 9764
<b>Tsitsikamma Section</b>		(042) 281 1607 (042) 281 1557	(042) 281 1629 (042) 281 1558
	Storms River Mouth (security gate remains open 24/7) Tsitsikamma Forest		

## Tsitsikamma Restaurant



Where is the place of much water? Where the booming breakers of the Indian Ocean relentlessly pound rocky shores, where temperate high forest and fynbos roll down to the sea in an unspoilt verdant carpet, where ancient rivers carve their paths to the ocean down rocky ravines.

This, "the place of much water", is the Tsitsikamma Section of the Garden Route National Park, where Tsitsikamma Restaurant is situated.

Tsitsikamma Restaurant is a glorious seafood eatery, contained by the Garden Route National Park. With a variety of dishes from traditional English breakfast & toasted sandwiches to burgers, pastas and steak, egg and chips however they put the most emphasis on their scrumptious seafood. Come try our Tsitsikamma Platter with ocean fresh fillet of hake, calamari, and a prawn skewer served with savoury rice and tartar sauce or our Fisherman's Platter with a prawn skewer, mussels in garlic sauce and fresh line fish, calamari, spicy rice & chips.

The heartland of the park stretches some 5km to sea, protecting a wonderland of inter-tidal life, reef and deep-sea fish. Dolphins frolic in the breakers, surfing and playing for the sheer joy of life, and the gentle giant of the ocean, the southern right whale visits here, coming inshore to breed. Tsitsikamma Restaurant is also a SASSI Aware participant which means they support sustainable and responsible fishing and seafood.

The famous Storms River Suspension Bridge spans the river mouth. There is also the Natures Valley Rest Camp at Natures Valley. This is where the world renowned Otter and Tsitsikamma Mountain trails starts.

### Contact Details

- Tel: +27 (0) 42 281 1190 Fax: +27 (0) 86 579 0729 E-mail: [Tsitsikamma@tourrest.co.za](mailto:Tsitsikamma@tourrest.co.za)

### Trading Hours

- Monday – Sunday: 08:30 to 22:00

### Activities & Facilities

There is a variety of fun and adventurous activities as well as excellent facilities available at the Garden Route National Park ranging from hiking trails, nature walks and much more.

### Activities

- [Harkerville Forest](#)
- [Hiking and Nature Walks](#)
- [Birding](#)
- [Camping](#)
- [Mountain Bike Routes](#)
- Recreational Facilities:
  - [Recreational Facilities in Goudveld Forest](#)
  - [Recreational Facilities in Diepwalle & Gouna Forest](#)
  - [Diepwalle and Gouna Forest](#)
  - [Recreational Facilities in Goudveld Forest](#)
  - [Recreational Facilities in Goudveld Forest](#)
  - [Tsitsikamma Recreation Facilities](#)
- [Cultural Activities](#)

## Facilities

- **\*\*\*[Function bookings available for a limited time!](#)\*\*\***
- **Restaurants**
  - [Tsitsikamma Section](#)
  - [Knysna Lakes Section](#)
- **Galleries/Arts & Crafts**

## Camping

Camping in the [Forest Timber Decks](#) and bond with nature, some of the decks are wheelchair friendly.

## Birding

More than 280 species of birds are listed in and around Knysna and many water birds abound Thesen Islands, Steenbok Park and further afield at Groenvlei and Swartvlei Lakes along the Rheendal Ramble. You can read more about [Knysna Lakes Section birds and birding](#).

## Mountain Bike Routes

### Knysna Town

The picturesque town of Knysna provides a wide variety of facilities and curio shops. Fishing, water skiing and pure relaxation are all part of Knysna, where conservation and recreation subtly harmonise. Private enterprises provide water sports such as sailing, angling, boardsailing and power boating in specifically zoned areas.

## Shopping

Knysna has a number of shopping centres, which provide for all a shopper's needs. There are supermarkets, boutiques, restaurants, coffee bars, pharmacies and a host of specialised shops. One centre is geared more towards the local arts and crafts and is housed in an up-graded historical building that was once a timber sawmill.

## Restaurants

The diner has a wonderful choice of restaurants, dining in elegant surroundings by candlelight or looking out over the Knysna Lagoon. There are intimate bistros or the opportunity to eat "al fresco", a popular activity due to Knysna's gentle climate and warm evenings. A host of coffee bars and pubs offer good wholesome "pub-grub" or South African fare as well as the locally brewed beer Mitchells Brewery, a legend in its own lifetime.

## Galleries/Arts & Crafts

As a result of a relaxed lifestyle, Knysna has over the years, attracted a wide variety of art and crafters, creating an artists' paradise. There are numerous galleries where one can enjoy the local arts and crafts and appreciate the talent and work that is produced here.

## Recreational Facilities in Harkerville Forest

Access to the facilities is gratis by means of self-issue permits at various unmanned access points. Certain access points are however manned at times, when entry fees will be levied.



### 1. The Garden of Eden

A superb example of Wet Highforest, an unusual forest-type with many examples of tall stinkwood (*Ocotea bullata*), kalander (*Podocarpus jalca/us*), wit-els (*Platylophus trifoliatus*) and other tree species of the moister forest types. Short, circular walks traverse the area and an 800 metre trail for those in wheelchairs is route-marked. This site was first opened in 1926.

### 2. Kranshoek Viewpoint and Picnic Site

One of the most beautiful spots on the southern Cape coast. Kranshoek offers the visitor cliff-top views of the coast and a warm, sheltered picnic site. There is even a stream, with frogs, for the children to play in.



### 3. Kranshoek Coastal Day-Walk

A nine kilometre, circular walk which traverses coastal forest and some spectacular coastal scenery. The full walk is fairly tough and demands a descent and ascent of 200 metres. Good walking shoes are essential. A shorter loop of approximately three kilometres can also be taken.

#### **4. The Harkerville Coast Hiking Trail**

This two-day, 24 kilometre hike, starts and ends at the Harkerville Forest Station. It passes through some prime examples of high-forest, crosses sections of coastal fynbos and takes the hiker along some breathtaking natural scenery along a cliff-coast. Bookings for the two huts, the Harkerville and the Sinclair, should be made with the Forestry Regional Office in Knysna, Tel: (044) 3825863.

#### **5. The Harkerville Mountain-bike Routes**

These routes offer some of the finest mountain-biking in South Africa. There are three route-marked tracks, colour coded Red (23 km), Green (15 km) and Blue (12 km). All three include sections of "off-road" riding along forest paths. The Red route includes some of the most dramatic scenery in the country.

#### **6. Horseriding**

A number of horse-trails 'have been marked through the indigenous forest.

#### **7. The Harkerville Youth Group Centre**

Basic budget accommodation is provided for youth groups. A kitchen area, an outdoor boma for braais, dormitory-type sleeping accommodation and ablution facilities with showers are available.

Reservations are through the SANParks Regional Office in Knysna.

#### **8. The Harkerville Forest Chalet**



A getaway in the tree-tops. The chalet is spacious, has two bedrooms with bathrooms en suite and is superbly appointed. It is the ideal place to enjoy the peace of the forest.

Reservations are through the SANParks Regional Office, Knysna.

#### **Harkerville Forestry Station**

- Tel: (044) 532 7770
- Fax: (044) 532 7770

**SANParks, Knysna**

- Tel: (044) 302 5606
- Fax: (044) 3025627

GRNP offers the visitor a wide range of outdoor activities. This leaflet highlights only those in Harkerville Forest.

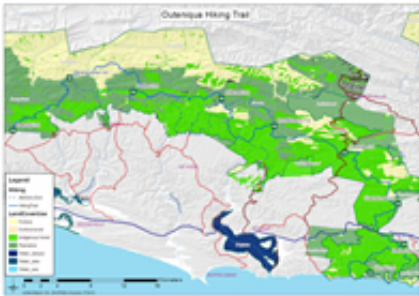
For more detailed information on recreational facilities in other State Forests in the southern Cape you are welcome to visit our Regional Office, in Demar Centre, Main Street, Knysna.

- Printable [PDF information brochure](#)

## Activities and Facilities

### Hiking and Nature Walks

#### The Outeniqua Trail



The 108km long trail starts at Beervlei and ends at Harkerville, running through the Diepwalle and Gouba Forest. [Outeniqua Hiking Trail brochure \(pdf\)](#)

#### Dalene Matthee Trail

This trail, [commemorating writer Dalene Matthee](#), follows an old mining path along the Forest Creek (This used to be the Woodcutters Trail)

#### Short Walks and Picnic Spots



- The Garden of Eden in Harkeville Forest offers the visitor a chance to explore the moister forest tree species from the vantage point of a picturesque picnic spot. Short circular walks and an 800m trail suitable for the mobility impaired are route-marked.
- Kranshoek Viewpoint and Picnic Site, this is the most beautiful spot on the Southern Cape Coast, it offers the visitor cliff-top views of the coast. Perfect to enjoy Sunset and best venue for Weddings.
- Kranshoek Coastal Day Walk.
- Julilee Creek , Milkwood and Krisjan-Se-Nek Picnic Site are all recreational facilities in Goudveld Forest.

## Birding

### Birding in the Tsitsikamma Section

Birding in Tsitsikamma offers a variety in choice of habitat.

There is the open shoreline as typified by the environment at Storms River Rest Camp. There is the more sheltered water ways of the Nature's Valley Lagoon and the Groot River. There is the forest experience of the Tsitsikamma Forest. Then there is the mountain fynbos one can explore in the Tsitsikamma Mountains in the Soetkraal section.

At **Storms River Rest Camp**, cormorants ( *Cape* and *White-breasted*), *Kelp Gulls* and *African Black Oystercatchers* are prominent along the coastline. Scanning out to sea, one should pick up Cape Gannet plummeting into the water. *Pied* and *Giant Kingfishers* can both be seen hunting fish at tidal pools or in the rivers that drain into the Indian Ocean . More inconspicuous, but also inhabiting these rivers are *Half-collared Kingfisher* and *African Finfoot*. (Although the most reliable place to see these species is on the Groot River at Nature's Valley.) The forest edges should produce *Chorister Robin-chat*, while the scarlet wings of *Knysna Turaco* (*Lourie*) may well be seen bursting from the cover of forest. *White-necked Raven* are frequently seen overhead while *Karoo Prinia* is prominent in the patches of coastal bush.

At **Nature's Valley** is probably the best place in the park to bird. Chorister Robin-chat is usually on hand in and around the accommodation. Also common in the rest camp are *Lemon (Cinnamon)* and *Red-eyed Dove*, *Olive Thrush*, *Terrestrial Brownbul (Bulbul)* and *Dusky Flycatchers*. In the forested areas, also look out for *Knysna Turaco*, *Emerald Cuckoo*, *Knysna* and *Olive Woodpecker*, *Narina Trogon*, *Sharp-billed Honeyguide*, *Grey Cuckooshrike*, *Knysna Warbler*, *Yellow-throated Woodland Warbler*, *White-starred Robin*, *Blue-mantled Crested Flycatcher* and *Cape Batis*, although some of these species are elusive.

The Tsitsikamma Forest also hosts *African Crowned Eagle* and *African Wood Owl*, plus some of the accipiters such as *African Goshawk* and *Black Sparrowhawk*.

In the mountains one should look for *Cape Canary* , *Cape Sugarbird* , *Orange-breasted Sunbird*, *Black Saw-wing* and *Ground Woodpecker*. Also present, though difficult to locate are *Protea Canary*, *Victorin's Warbler*, *Striped Flufftail* and *Cape Siskin* .

### Birding in the Wilderness Section

- The tidal nature of the Touw River adjacent the Ebb and Flow Rest Camp exposes mudbanks that host *White-fronted Plover*.
- The series of lakes connected by the Touw River (Eilandvlei, Langvlei and Rondevlei) host a variety of aquatic species and is an internationally proclaimed Ramsar site.
- Major concentrations of *Great Crested* and *Black-necked Grebe* are present on Rondevlei and Bo Langvlei.
- *Reed Cormorant*, *Grey* and *Purple Heron*, *Little Egret*, *African Spoonbill*, *Little Bittern* and *Red-knobbed Coot* are prominent.
- Wildfowl is prolific including *Yellow-billed*, *Maccoa* and *White-backed Duck*, *Cape Shoveler* , *Southern*

*Pochard* and *Cape*, *Red-billed* and *Hottentot Teal*.

- There is a hide at Rondevlei, from where careful scanning of the reeds could produce *Purple Gallinule*, *African Rail*, *Black* and *Baillon's Crake*.
- The Swartvlei Estuary immediately east of the Touw River lakes hosts many of the species listed above.
- It is also a better venue for viewing waders. *Caspian Tern* and *Kelp Gull* are prominent.
- The forested hillsides that surround the area are home to several raptors, including: *Cuckoo Hawk*, *Crowned Eagle*, *Forest Buzzard*, *Black* and *Rufous-chested (Red-breasted) Sparrowhawk* and *African Goshawk*.
- Look for *Red-necked Spurfowl* along quiet roads with overgrown verges.
- The park has several walking trails, several of which are named after kingfisher species and not without reason, as *Brown-hooded*, *Malachite*, *Giant*, *Pied* and *Half-collared* can all easily be seen.

(For more birding information and park bird checklist, go to [Information for Birders](#))

## Birding in the Knysna Section

The tidal lagoon and open estuary of the Knysna River provides an excellent place to view waders in the summer months. *Grey Plover*, *Marsh Sandpiper*, *Greenshank*, *Curllew Sandpiper* and *Whimbrel* are prominent. All year, but particularly in winter, the lagoon hosts some non-migratory larger species (egrets, spoonbills, gulls, cormorants, ibises). The threatened *African Black Oystercatcher* is present all year, but their numbers increase in winter to what is regarded as a globally significant population. *Cape Shoveller*, *Kittlitz's Plover*, *Pied Avocet* and *Black-winged Stilt* are also present in good numbers. African Fish Eagle and Osprey should also be watched out for.

## Mammals

As the Garden Route National Park is now the merged complement of the previous national parks of Knysna, Tsitsikamma and Wilderness - the mammals will still be found in those distinct areas.

- [Knysna Section](#)
- [Tsitsikamma Section](#)
- [Wilderness Section](#)

## Knysna Section

### Common Name

African elephant  
Black clinging bat  
Blue duiker  
Bushbuck  
Bushpig  
Cape dune molerat  
Cape grey mongoose  
Cape hairy bat  
Cape horseshoe bat  
Cape molerat  
Cape mouse  
Cape porcupine  
Cape wild cat  
Caracal  
Chestnut climbing mouse  
Clawless otter

### Scientific Name

*Loxodonta africana*  
*Miniopterus fraterculus*  
*Cephalophus monticola*  
*Tragelaphus scriptus*  
*Potamochoerus porcus*  
*Bathyergus suillus*  
*Herpestes pulverulentus*  
*Myotis tricolor*  
*Rhinolophus capensis*  
*Georchus capensis*  
*Praomys verreauxi*  
*Hystrix africaeaustralis*  
*Felis lybica*  
*Felis caracal*  
*Dendromus mesomelas*  
*Anonyx capensis*

Common molerat  
Duthie's golden mole  
Forest mouse  
Forest shrew  
Geoffroy's horseshoe bat  
Grey rhebuck  
Grysbok  
Honey badger  
Hottentot golden mole  
Klipspringer  
Knysna golden mole  
Kuhl's bat  
Large grey mongoose  
Large-spotted genet  
Leopard  
Long-eared bat  
Long-tailed housebat  
Red musk shrew  
Rock dassie  
Scrub hare  
Serval  
Striped polecat  
Vervet monkey  
Vlei rat  
Water mongoose  
Wooly bat

### **Tsitsikamma Section**

#### **Common Name**

African weasel  
African wild cat  
Blainville's beaked whale  
Bottle nose dolphin  
Brant's climbing mouse  
Brown rat  
Bryde's whale  
Cape clawless otter  
Cape dune molerat  
Cape horseshoe bat  
Cape molerat  
Cape porcupine  
Cape spiny mouse  
Caracal  
Chacma baboon  
Common dolphin  
Common molerat  
Dark-footed forest shrew  
Dwarf sperm whale  
Egyptian fruit bat  
Euphrosyne dolphin  
Forest shrew  
Greater musk shrew  
Hector's beaked whale

Cryptomys hottentotus  
Chlorotalpa duthiae  
Thamnomys dolichurus  
Mysorex variatus  
Rhinolophus clivosus  
Pelea capreolus  
Raphicerus melanotis  
Mellivora capensis  
Amblysomus hottentotus  
Oreotragus oreotragus  
Amblysomus iris  
Pipistrellus kuhlii  
Herpestes ichneumon  
Genetta tigrina  
Panthera paradus  
Nycteris thebaica  
Eptesicus hottentotus  
Crocidura flavescens  
Procavia capensis  
Lepus saxatilis  
Felis serval  
Ictonyx striatus  
Cercopithecus pygerythrus  
Otomys irroratus  
Atilax paludinosus  
Kerivoula lanosa

#### **Scientific Name**

Poecilogale albinucha  
Felis lybica  
Mesoplodon densirostris  
Tursiops truncatus  
Dendromus mesomelas  
Rattus norvegicus  
Balaeoptera edeni  
Aonyx capensis  
Bathyergus suillus  
Rhinolophus capensis  
Georychus capensis  
Hystrix africae australis  
Acomys subspinosus  
Felis caracal  
Papio ursinus  
Delphinus delphis  
Cryptomys hottentotus  
Myosorex cafer  
Kogia simus  
Rousettus aegyptiacus  
Stenella coeruleoalba  
Myosorex varius  
Crocidura flavescens  
Mesoplodon hectori

Honey badger  
House rat  
Humpback dolphin  
Humpbacked whale  
Killer whale  
Large-spotted genet  
Leopard  
Multimammate rat  
Pygmy mouse  
Pygmy sperm whale  
Risso dolphin  
Schreibers' long fingered bat  
Scrub hare?  
Small grey mongoose  
Small-spotted genet?  
Southern right whale  
Striped mouse  
Striped polecat  
Verreaux's mouse  
Vervet monkey  
Vlei rat  
Woodland dormouse  
Woodland mouse  
Zulu golden mole

### Wilderness Section

#### Common Name

Black rat  
Bushbuck  
Bushpig  
Cape dune molerat  
Cape fur seal  
Cape grey mongoose  
Cape horseshoe bat  
Cape porcupine  
Cape serotine  
Caracal  
Chestnut climbing mouse  
Clawless otter  
Common molerat  
Duthie's golden mole  
Dwarf shrew  
Forest shrew  
Grysbok  
Honey badger  
Large grey mongoose  
Large-spotted genet  
Leopard  
Pygmy mouse  
Red musk shrew  
Rock dassie  
Scrub hare  
Southern elephant seal

Mellivora capensis  
Rattus rattus  
Sousa plumbea  
Megaptera novaeangliae  
Orcinus orca  
Genetta tigrina  
Panthera pardus  
Mastomys natalensis  
Mus minutoides  
Kogia breviceps  
Grampus griseus  
Miniopterus schreibersii  
Lepus saxatilis  
Galerella pulverulenta  
Genetta genetta  
Balaena glacialis  
Rhabdomys pumilio  
Ictonyx striatus  
Myomyscus verreauxi  
Cercopithecus pygerythrus  
Otomys irroratus  
Grahiurus murinus  
Grammomys dolichirus  
Amblysomus iris

#### Scientific Name

Rattus rattus  
Tragelaphus scriptus  
Potamochoerus porcus  
Bathyergus suillus  
Arctocephalus pusillus  
Herpestes pulverulentus  
Rhinolophus capensis  
Hystrix africae australis  
Eptesicus capensis  
Felis caracal  
Dendromus mesomelas  
Aonyx capensis  
Cryptomys hottentotus  
Chlorotalpa duthiae  
Suncus etruscus  
Mysorex variatus  
Raphicerus melanotis  
Mellivora capensis  
Herpestes ichneumon  
Genetta tigrina  
Panthera pardus  
Mus minutoides  
Crocodyrus flavescens  
Procavia capensis  
Lepus saxatilis  
Mirounga leonina

Striped mouse  
Striped polecat  
Sub-Antarctic fur seal  
Vervet monkey  
Vlei rat  
Water mongoose  
White-naped weasel

Rhabdomys pumilio  
Ictonyx striatus  
Arctocephalus tropicalis  
Cercopithecus pygerythrus  
Otomys irroratus  
Atilax paludinosus  
Poecilogale albinucha

## Vegetation

### Tsitsikamma Section

Although Tsitsikamma boasts a magical world of intertidal life and reefs in its marine part, there is also the famous terrestrial part of the park with its lush forest, delicate fynbos and sheer cliffs. One of the most conspicuous trees is the Outeniqua yellow-wood, *Podocarpus falcata*.

### Wilderness Section

The vegetation of the Wilderness Area can be divided into three major components: Terrestrial vegetation, which includes indigenous forests, plantations and coastal fynbos.

*Three major zones of indigenous forest are:*

- Wet mountain forest – occurring in steep kloofs consisting of typical Afro-mountain species plateau forest and - occurs on the coastal plateau and includes typical Afro-mountain species dry forest – occurs predominantly in steeply insized plateau valleys and along the coast.
- Large sections of indigenous forests remain particularly in the Karatara River, Duiwe River and Touw River. A small catchment of indigenous forest lies within the boundaries of the Wilderness National Park.
- Large portions of the river catchments are under pine and eucalypt plantations, or are utilized as agricultural land.

*Four types of fynbos found in the area include:*

- Short Asteraceae fynbos, occurring mainly on the seaward slopes of primary dunes and other slopes adjacent to the sea.
- Tall fynbos – occurs primarily on more inland dunes and north facing slopes, consisting of fynbos shrubs and small patches of forest trees of the Kaffrarian ticket.
- Passerina/annual herbs are restricted to land adjacent to the lakes and Serpentine channel. Passerina spp. Are dominant, with a large number of fynbos annual herbs recorded.
- Restoid/grassy dunes are largely restricted to the Rondevlei area and consist mostly of true fynbos elements.

The latter is well represented in the Wilderness National Park, with the area between Rondevlei and Swartvlei Lake supporting this vegetation type.

### Semi-aquatic flora

Semi-aquatic flora of low- lying areas adjacent to the lakes and channels, which is normally inundated at high water levels.

The most widespread semi-aquatic species include reeds (*Phragmites australis*), sedges (*Scirpus littoralis*, *Scirpus nodosus* and Cyperaceae generally) and bulrushes (*Typha latifolia*) with the rush *Juncus kraussii* occupying a

transitional zone between the semi-aquatic and terrestrial environments, which is inundated only during very high water levels.

Other semi-aquatic species on floodplain area include the grasses *Paspalum vaginatum* and *Pennisetum clandestinum* with the intertidal saltmarsh areas in Swartvlei being colonized predominantly by *Sarcocornia natalensis*, *Salicornia meyerana*, *Triglochin striata*, *Cotula coronopifolia* and *Stenotaphrum secundatum*.

### **Aquatic plants of channels and lakes**

One of the most striking features of the waterbodies of the Wilderness National Park is the presence of extensive tracts of submerged aquatic plants. These plants occur in monospecific and mixed stands, of which the most abundant and widespread include members of the family Characeae (*Chara globularis*, *Lamprothamnium papulosum*), the “pondweed” (*Potamogeton pectinatus*), seagrass (*Ruppia cirrhosa*), and epiphytic algae.

## **School Groups**

### **Facilities & guided activities for school groups**

The staff of Garden Route National Park is committed to manage this park for the pride and joy of all South Africans.

Through our Environmental Interpretation and Education programme, we aim to instill a conservation ethic in the people of our beautiful country with its rich cultural and natural heritage.

The variety of activities on offer has been developed in liaison with various educators, conservationists and adventure operators in order to cater for various user groups. Trained staff and eco-guides from local communities are available to ensure that meaningful environmental learning takes place amid the fun and adventure of the outdoors. All organised groups that have pre-booked an educational excursion are granted free entry into Garden Route National Park and charged only for the specific activities and services rendered by staff and guides.

*If we can be of assistance in any way to make a visit to Tsitsikamma possible for your group, feel free to contact us on:*

- Telephone: +27 (0) 42 28 11 607
- Fax: +27 (0) 42 28 11 629
- [E-mail](#)

### **Facilities**

- Information Centre at Storms River Mouth Rest camp
- Group accommodation (30 persons) at Nature's Valley Rest Camp
- Group accommodation (60 persons) at Storms River Mouth Rest Camp
- Tents available (and for hire) for tented camps (both rest camps)

### **Activities**

- Guided nature trails (1 – 4 hrs) Inter tidal pool exploration (incl. Snorkeling and treasure hunt)
- Estuarine Excursion (incl. Canoeing)
- River Excursion (short trail and boat ride.)
- Forest Excursion (guided trail and experiential learning activities)
- Adventure Activities: Diving, Abseiling and Climbing, Black water tubing, Mountain biking etc.

- Overnight camps (accommodated in huts or tents)

### Further queries can be directed to:

- **Elzette Bester - Manager: Social Ecology** Tel. +27 (0) 42 281 1607 [E-mail](#)

## People with Disabilities

### Wheelchair Access Profiles



- [Tsitsikamma Section](#)
- [Wilderness Section](#)

### Accommodation

As at July 2010 there are 5 units in Garden Route National Park that have adaptations for guests with mobility challenges, 3 in the Tsitsikamma section and 2 in the Wilderness section.

These units need to be booked directly with SANParks as they are held on reserve for guest who require them and cannot be booked through satellite offices or through the on-line mechanism. Email [reservations@sanparks.org](mailto:reservations@sanparks.org) or phone +27 (0)12 428 9111 and request a unit accessible to the mobility challenged. Do not book another unit and expect that you can swap when you get to the park.

There are also 3 adapted accessible campsite ablutions (one in Tsitsikamma section and 2 in Wilderness section) – see access profiles for images and detail. There is also a selection of privately run accommodation, in the greater area encompassed by the park and some of these private operators have adapted their accommodation to be universally accessible.

### Wheelchair Access Activities

Walks and Trails are one of the major ecotourism attractions of the park, and many pass through spectacular coastal and forest scenery. The 5-day Otter Trail in the Tsitsikamma Section has an international reputation, but this entails some heavy terrain and crossing of river mouths at low tide, but there are many shorter day walks in the park as well. The most popular of these is perhaps the walk from the main complex to the Storms River Mouth Suspension Bridge, also in the Tsitsikamma Section, but this also involves ascending/descending a steep incline and crossing a beach and is not suitable for wheelchair users.

**There are however trails in the park that are suitable for wheelchair users and others with mobility challenges:** At Nature's Valley there is a short circular route adjacent the Groot River. This trail is a boardwalk made from recycled polywood, which means there is no impairing impact from tree roots, leaf litter, muddy or

sodden ground etc. There is a kick-plate on the one side of the path and a banister on the other. The trail passes through virgin forest and is a great way for a wheelchair user to leave the signs of human development behind and with a bit of stealth get some great sightings of forest birds and mammals.



At the Garden of Eden (immediately adjacent the N2 between Plettenberg Bay and Knysna) there is marked 800m circular route accessible to wheelchair users.

CA At the Big Tree – an ancient Outeniqua Yellowwood (There are a couple of trees labelled the Big Tree in the area, but this one is also on the N2 between the turn off to Storm's River Camp and where the highway crosses the Storm's River over the Paul Sauer Bridge) which also has a boardwalk from the parking area to the tree and the track takes one through lush indigenous forest.

Some other forest tracks in the greater park may also be partially or fully accessible to a person in a wheelchair.

Although not a designated trail, wheelchair users looking for a suitable surface and gradient may wish to travel to the village of Nature's Valley (especially outside of school holidays when many of the holiday houses are empty). The narrow tarred road network of the village is perfect for moving around and in many places the forest encroaches into the garden so much that it is almost like being in the forest itself. The village is adjacent a lagoon and people can also make their way along the water's edge down to the beach.

Wheelchair users wanting to enjoy great views of the Indian Ocean can also make use of the tar road through Storm's River Rest Camp.

**There are a variety of privately run activities in the vicinity of the park that afford access opportunity. Two that offer good access opportunity are:**

- A visit to Monkeyland (in a 12 hectare plot in the Tsitsikamma Forest just off the N2) is highly recommended. Most of the reserve is accessible, while guides are more than willing to assist where paths are difficult. The sanctuary is a rehabilitation place for primates, including gibbon, spider monkey and howler monkey. Accessible ablutions are available. <http://www.monkeyland.co.za/>
- Just adjacent this and under the same ownership is Birds of Eden, the largest free-flight aviary in the World. The pathway is accessible throughout the entire facility. It does descend down into a steep ravine, so assistance may be required by some. A plethora of bird species roam the aviary. Accessible ablutions are available. <http://www.birdsofeden.co.za/>

(Please see additional information on [Wheelchair Accessibility](#))