

The use of Cyber Tracker in Addo Elephant National Park (AENP)

Ilse Welgemoed

Plans to expand the 164 000 ha Addo National Elephant Park into a 360 000 ha mega-park are moving forward at an exciting pace. Some of its unique features already include:

- Unrivalled natural diversity, with five of South Africa's seven major vegetation zones (biomes).
- The Big 7 (Elephant, rhino, lion, buffalo, leopard, whales and great white sharks) in their natural habitat.
- Alexandria dunefield – the largest coastal dunefield in the southern hemisphere.
- A rich heritage of archaeological and historical sites.



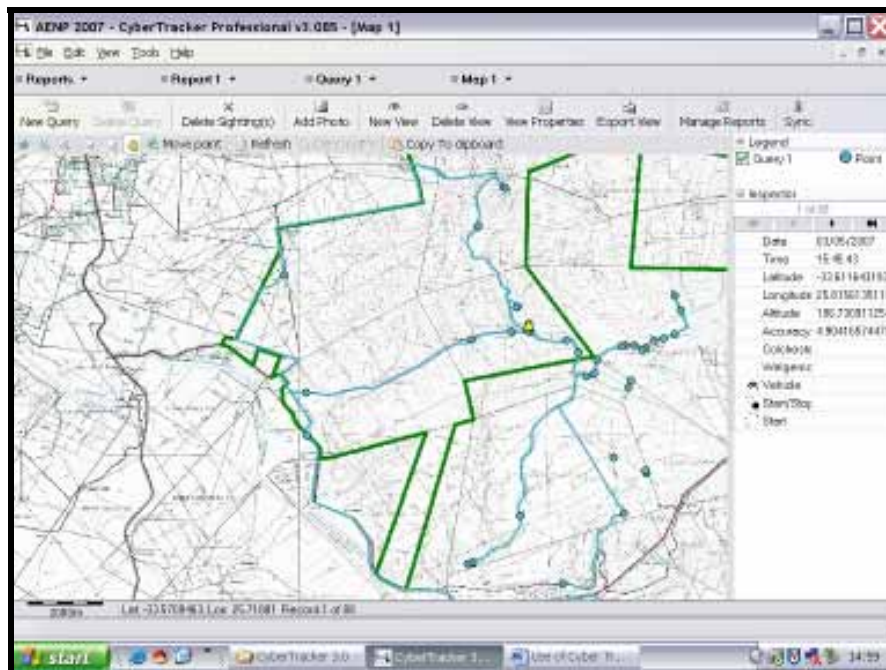
In addition, plans include the proposed proclamation of a 120 000 ha (296 500 acre) marine reserve that includes islands (already incorporated into the park) that are home to the world's largest breeding population of Cape gannets and second largest breeding population of African penguins.



CyberTracker will enable us to monitor “lower profile” species, habitats and processes that cannot be captured by more traditional monitoring methods.

Additional monitoring activities include assessing the population status of African black oystercatchers along the stretch of sandy beach between the Sundays River mouth and Woody Cape.

The Park has already developed its own customised database. This icon-based system, with both English and Xhosa descriptions, is user-friendly for illiterate rangers, ensuring that no valuable data is lost. Currently there are only 6 units available to the 69 rangers in 6 different sections of the Park.



To successfully implement the CyberTracker system, the Park requires many more of these mobile devices with integrated GPS. Donations and support would greatly increase the chances of this project succeeding within Addo Elephant National Park.