

GREAT LIMPOPO TRANSFRONTIER PARK

History and Context

Kruger National Park
Science Networking meeting
17 March 2006



South African
NATIONAL PARKS

Great Limpopo Transfrontier Park

Legend:

- ▭ National Park
- Town
- Road
- River
- International Boundary
- National Boundary
- Provincial Boundary
- District Boundary
- Local Government Boundary
- Water Body
- Wetland
- Forest
- Protected Area
- World Heritage Site
- Ramsar Site
- Biosphere Reserve
- Marine Protected Area
- Marine Reserve
- Marine Park
- Marine Protected Area
- Marine Reserve
- Marine Park

Great Limpopo TRANSFRONTIER PARK

Department of Environmental Affairs and Tourism
 Department of Parks and Wildlife
 Department of Forestry, Fisheries and the Environment

Great Limpopo Transfrontier Park

Background

1. International Agreement signed in 2000 (Skukuza)
2. International Treaty signed in 2002 (Xai-Xai)
3. Zimbabwe currently Co-ordinating Country – International Co-ordinator Ms Fannie Mutepfa
4. Management of Joint Issues the responsibility of Tri-Lateral Management Committees
5. Existing frameworks guiding activities of Joint Committees – Joint Management Plan and Integrated Tourism Development Plan
6. Two Phased approach to the Project
 - Development of GLTP
 - Development of GLTFCA



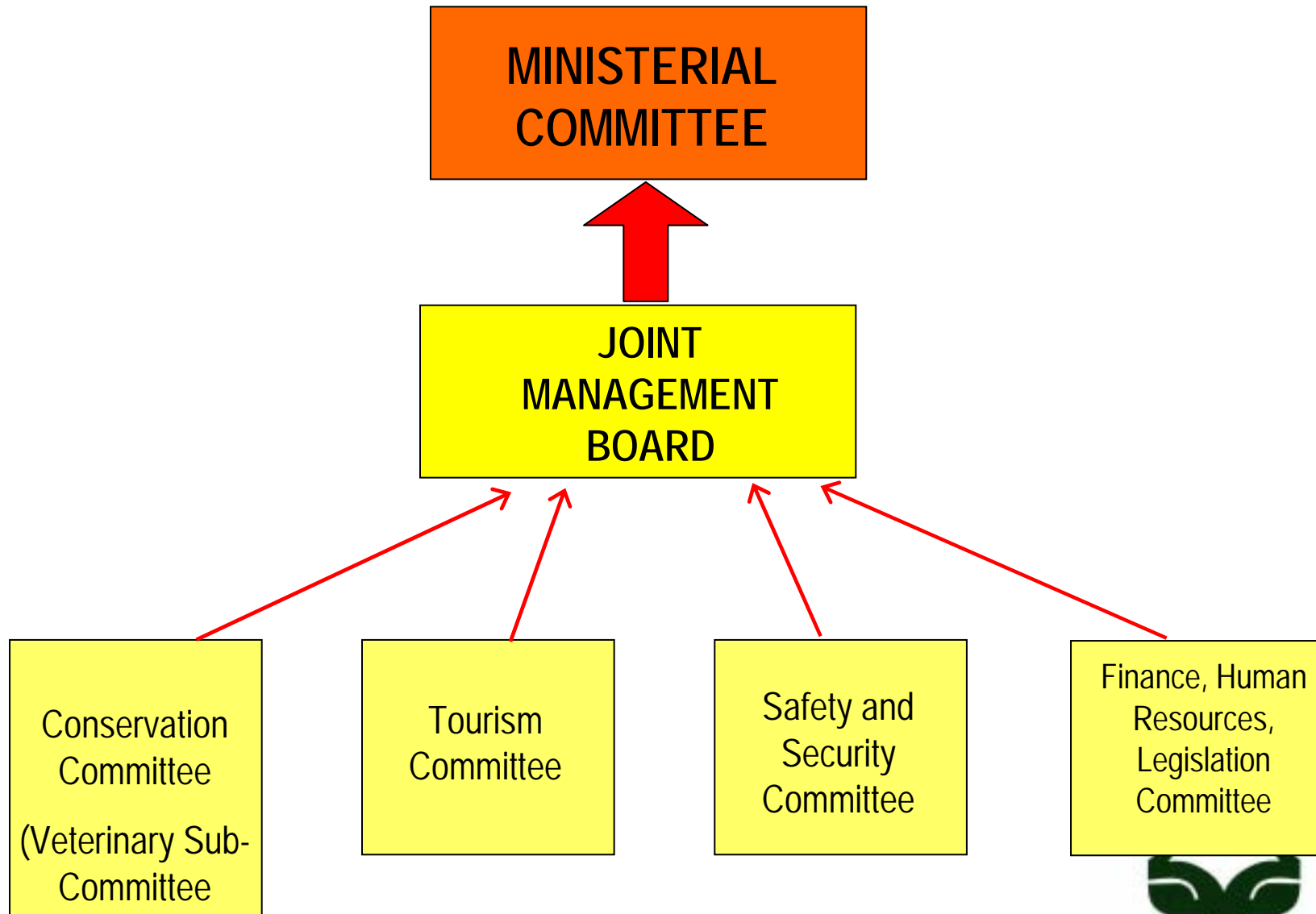
Signing of the GLTP Treaty on 9 December 2002



Dropping of the first section of the Kruger National Park Boundary Fence



TRANSFRONTIER CONSERVATION AREAS



Existing Management Structures of the GLTP



Great Limpopo Transfrontier Park

Key activities in 2005 / 2006

1. Dropping of sections of the KNP eastern boundary fence (approximately 45km dropped to date)
2. Initiate the development of the GLTFCA
3. Implementation of the Integrated Tourism Development Plan for the GLTP (Pafuri Land Use Plan & Gonarezhou Integrated Tourism Development Plan)
4. Official opening of the Giryondo Border Post
5. Continuing the Wildlife Translocation Programme
6. Setting up Project Implementation Unit



South African
NATIONAL PARKS



ANIMALS TRANSLOCATED TO MOZAMBIQUE 2001 - 2005

	2001	2002	2003	2004	2005	Total
Elephants	25	48	38	0	0	111
White Rhino	0	2	0	10	0	12
Buffalo	0	0	0	49	0	49
Blue Wildebeest	0	264	235	98	98	695
Impala	0	588	273	127	369	1357
Zebra	0	158	366	195	205	924
Waterbuck	0	15	9	0	18	42
Giraffe	0	4	13	15	14	46
Roan	0	0	0	0	25	25
Lichtenstein Hartebeest	0	0	0	0	7	7
Total	25	1079	934	494	736	3268



**South African
NATIONAL PARKS**



Great Limpopo Transfrontier Park

Key activities in 2005 / 2006

7. Wildlife Disease Monitoring Initiatives
8. Social Research Initiative
9. Development of a 5-year Integrated Development and Business Plan



Thank you very much!

