



A New Look at the Landscape Consequences of Population Resettlement from Protected Areas

Jen Shaffer
Jessica Milgroom
Kruger Science Meetings
April 2008

Simplicity, Complexity, & Management

- Sim Safari
- Real World Protected Areas

Conservation problems could contain opportunities for improving landscape management.



A Landscape Approach

- Defining the Landscape
- Focus doesn't stop at the fenceline
- Adaptive Management
- Different Goals, Similar Results



Kruger National Park

Scientific Adaptive Management

- Trial and Error
- Complex Socio-Ecological System
- Inputs from Outside Park Fences



Increase Local Participation

- Raising Awareness
- Conservation Education
- Land Use Rights





Source: Stalmans, 2002 (JPEG image derived from Landsat image – Dr H Biggs, SanParks)

Reserva Especial de Maputo

REM Management Issues

- Poaching
- Uncontrolled Fires
- Wildlife Conflict
- Communities Inside REM Borders



Local Community Management

- Values and Institutions
- Livelihood Activities
- Environmental Knowledge



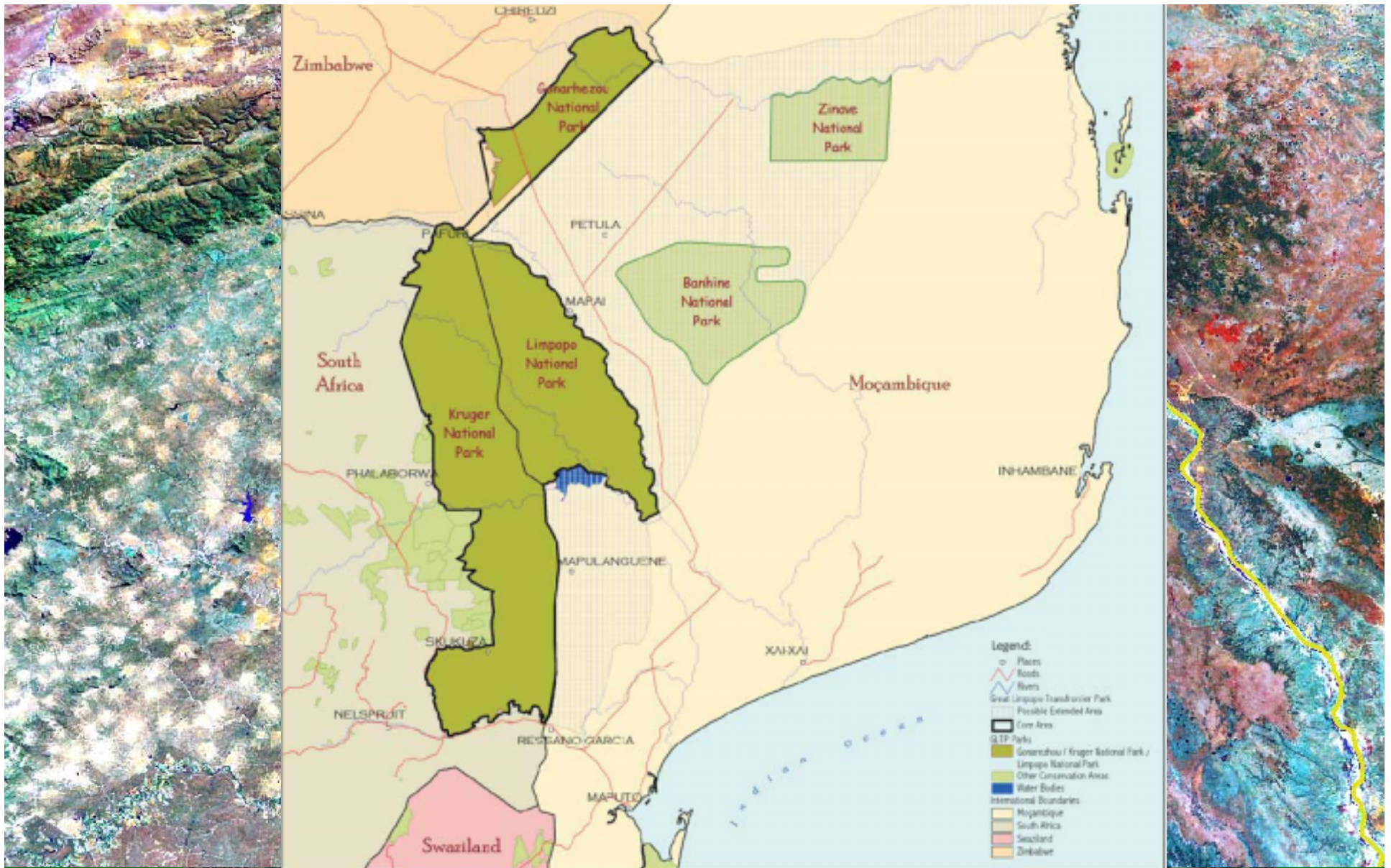
LIMPOPO NATIONAL PARK

Learning & Adaptation

- Tourism development
- Wildlife reintroduction & fence removal
- Population resettlement







Opening space for free movement of fauna is fundamental to transfrontier conservation objectives.

However, the creation of the LNP is likely to create hard boundaries where there are none now.

People in parks



Resettlement

- Known to cause impoverishment and marginalization
- Difficult and costly to do well
- Risk that people may return
- Concentrates use of resources
- Contributes to loss of local knowledge

Regardless, sometimes resettlement may be the best option



“Area reserved for the resettlement of the village of Macavene”

Conserving Domesticated Landscapes

Allow Communities to Practice Livelihood Activities

- Avoid distinct boundaries at protected area borders
- Maintain desirable landscape outcomes
- Conserve biodiversity

Different Goals, Similar Results



Accessing Local Environmental Knowledge



No Need to Reinvent the Wheel

- History of use & interaction
- Use in conjunction with scientific knowledge

Potential Difficulties

- Different formats & perspective
- Taking advantage

Ex-poachers make the best field scouts...

Could park management teams involve residents or ex-residents to use their knowledge of fire to burn for wildlife instead of for agriculture or livestock?



Could conservation efforts benefit from residents' knowledge of the area, of the vegetation and their historical perspective to monitor:

changes in woody vegetation?

alien and invasive species?

status of endemic, rare or threatened plant species?

What about participatory research on climate change?

OR training the next generation?





Thank you